

QUANTITIES

Item No. 12	Common Excavation	730 Cu. Yds.
Item No. 13	Dry Excavation for structures	155 Cu. Yds.
Item No. 13	Wet Excavation for structures	58 Cu. Yds.
Item No. 13	Solid Rock Excavation for structures	26.3 Cu. Yds.
Item No. 54	Class "A" Concrete	90.68 Cu. Yds.
Item No. 54	Class "S" Concrete	77.56 Cu. Yds.
Item No. 55	Reinforcing steel	28676.00 lbs.
Item No. 74	Concrete Handrail for structures	120 Lin. Ft.

GENERAL NOTES

All exposed corners to have $\frac{3}{4}$ " chamfer unless otherwise noted.

Precast concrete handrail to be 1:1.2 mix, maximum aggregate 5".

All concrete above top of pier caps, except handrails to be Class "S".

Reinforcing steel to be deformed bars of structural or intermediate grade.

Shop list and bending diagrams must be submitted and approved before fabrication is begun.

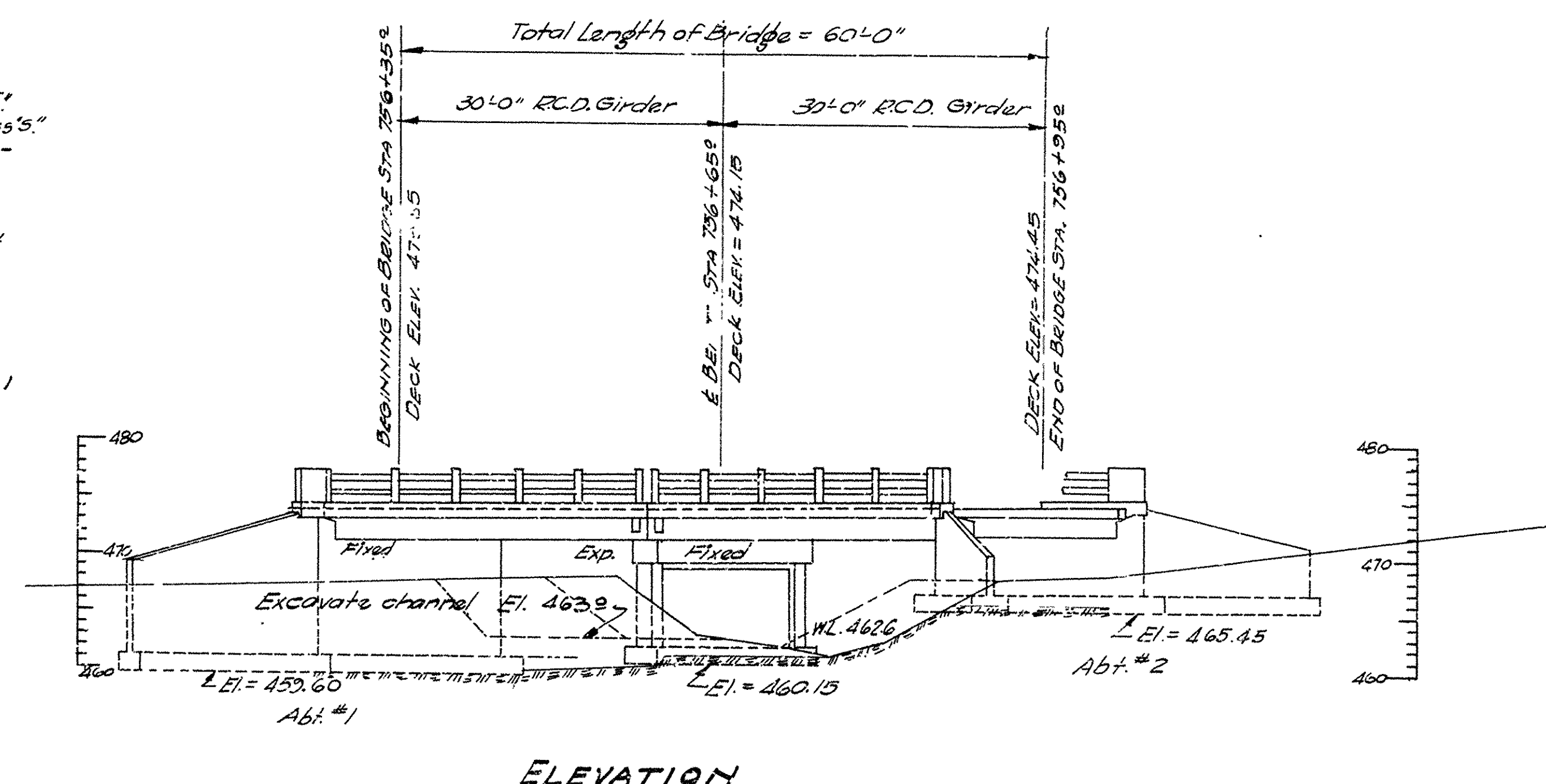
Roadway drains and expansion devices to be paid for at unit prices bid for reinforcing steel.

Specifications: Arkansas Standard Road and Bridge Specifications, adopted May 30, 1925 and revised.

For Details of abutments see drawings # 3029 & # 3030

For Details of bents and turnouts see drawing # 3031

For Details of superstructure see drawing # 3037



LAYOUT OF
BRIDGE OVER POND CREEK
FRANKLIN CO.
ROUTE 64 SEC. 3
ARKANSAS STATE HIGHWAY COMMISSION
LITTLE ROCK, ARK.

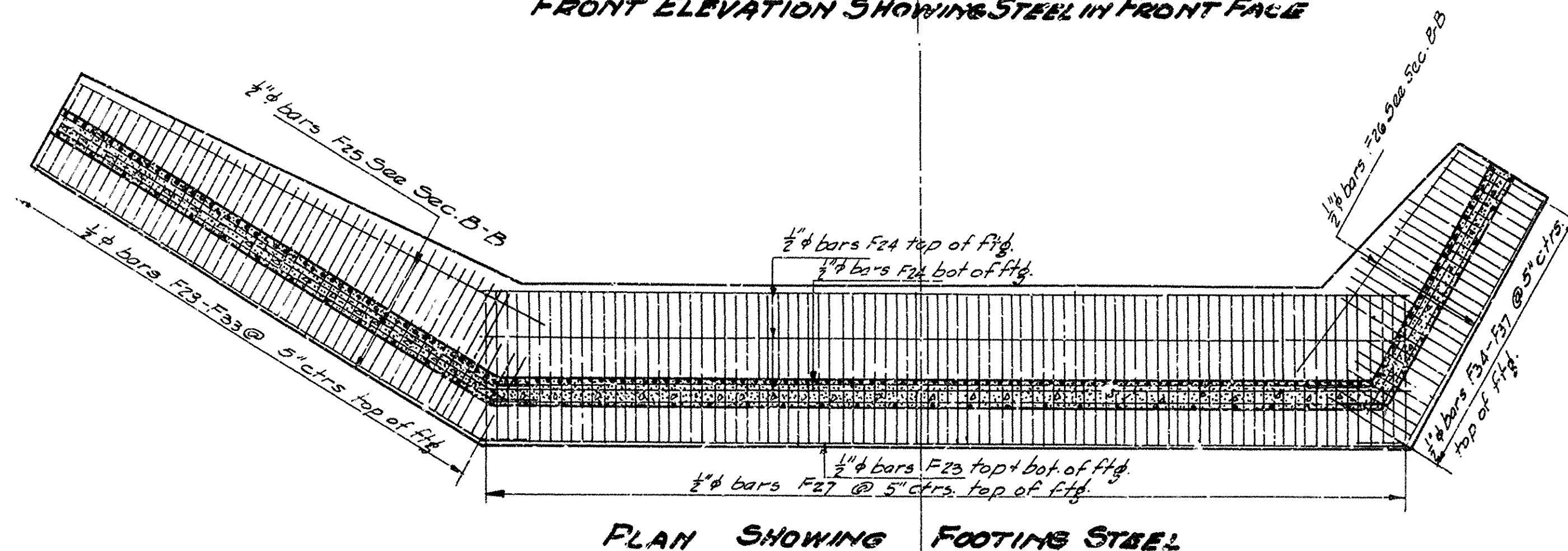
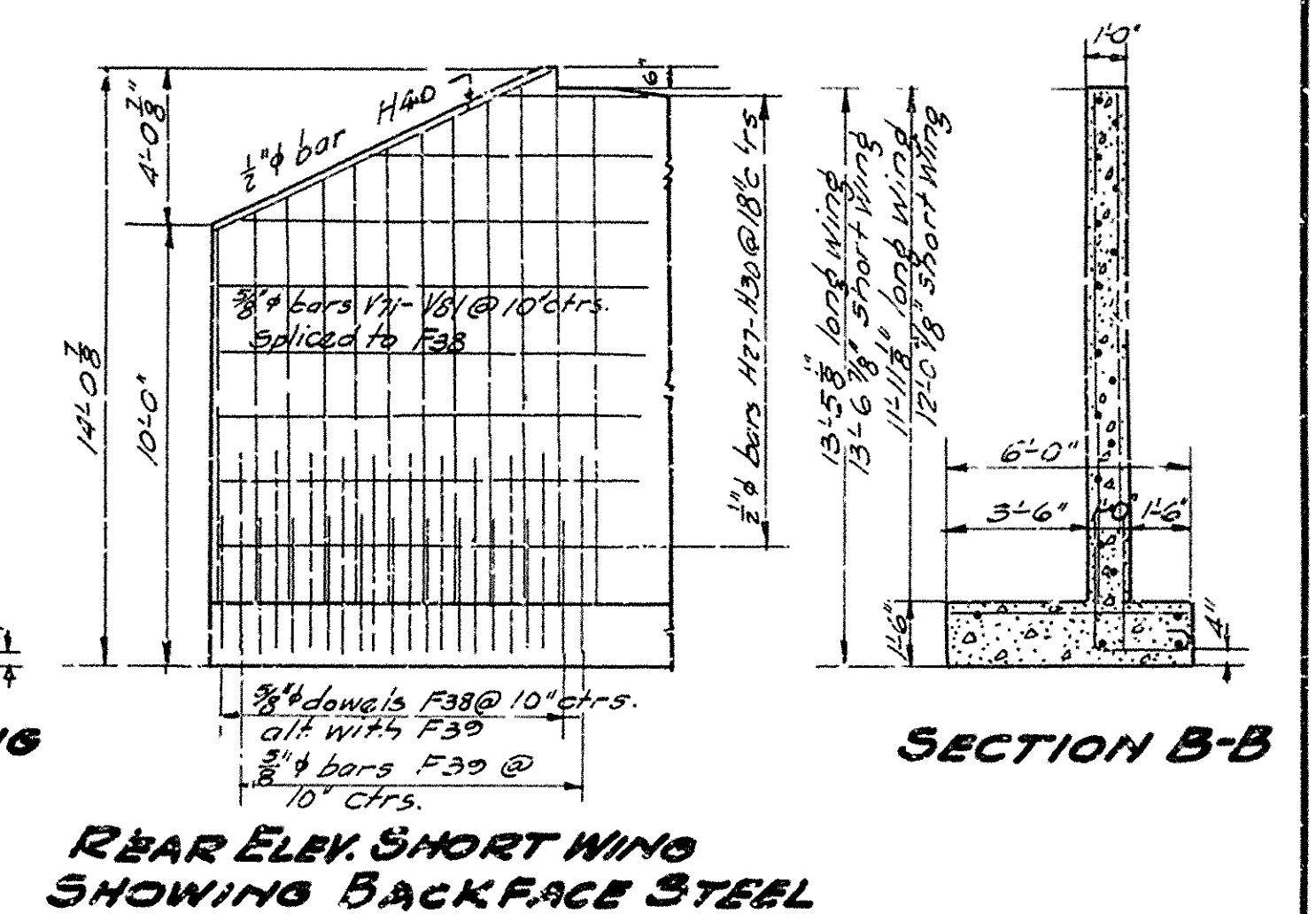
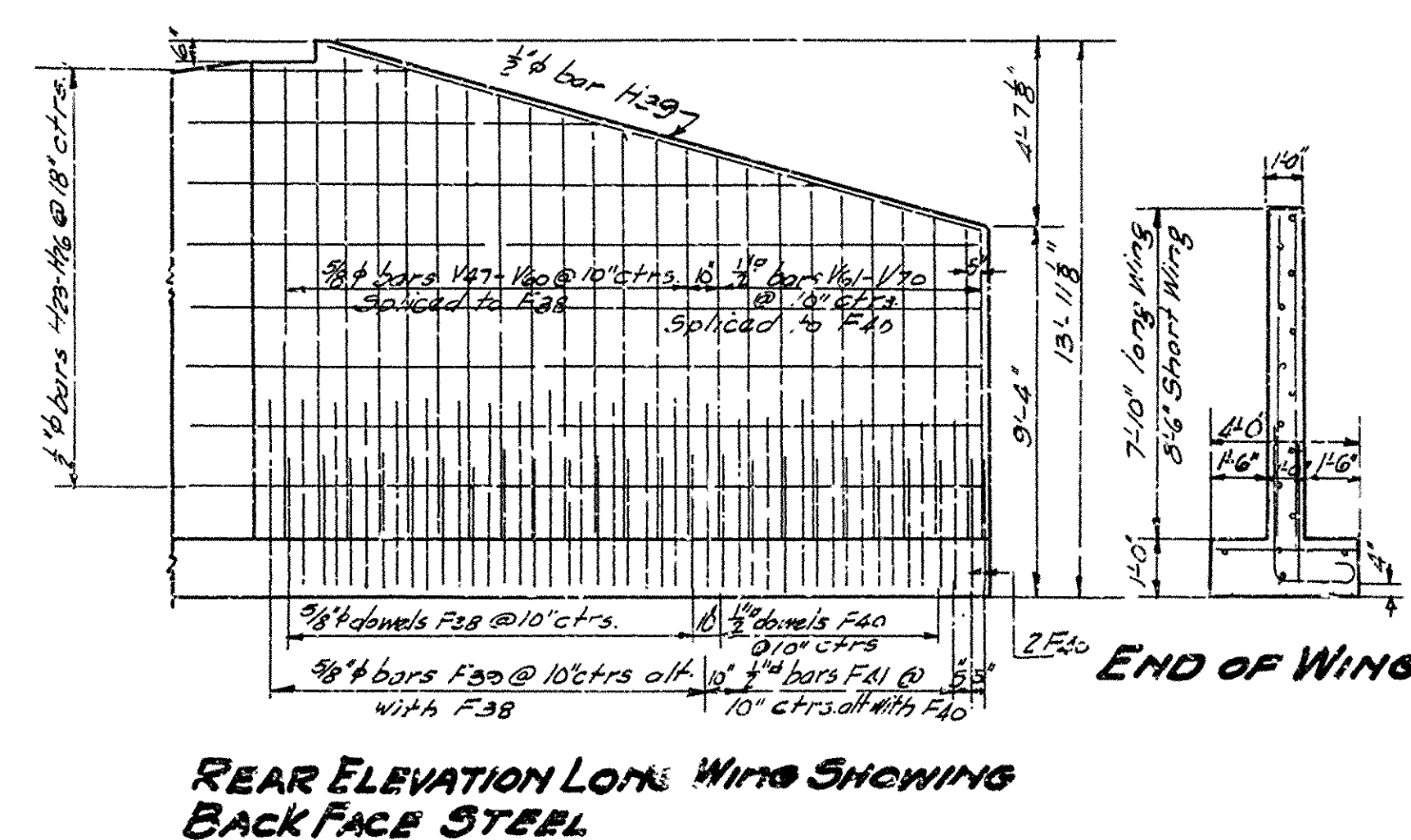
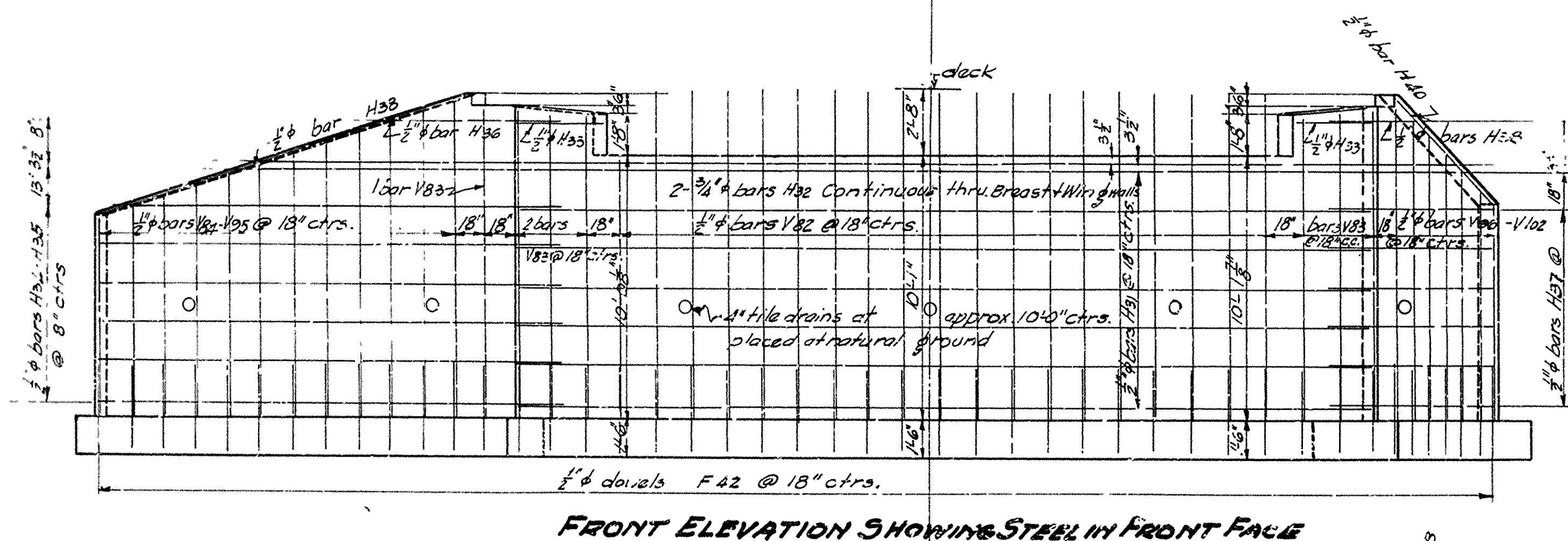
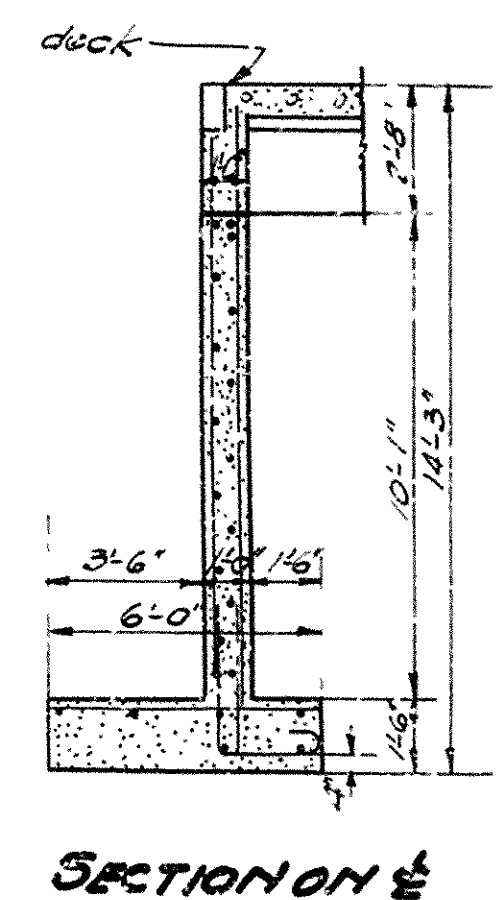
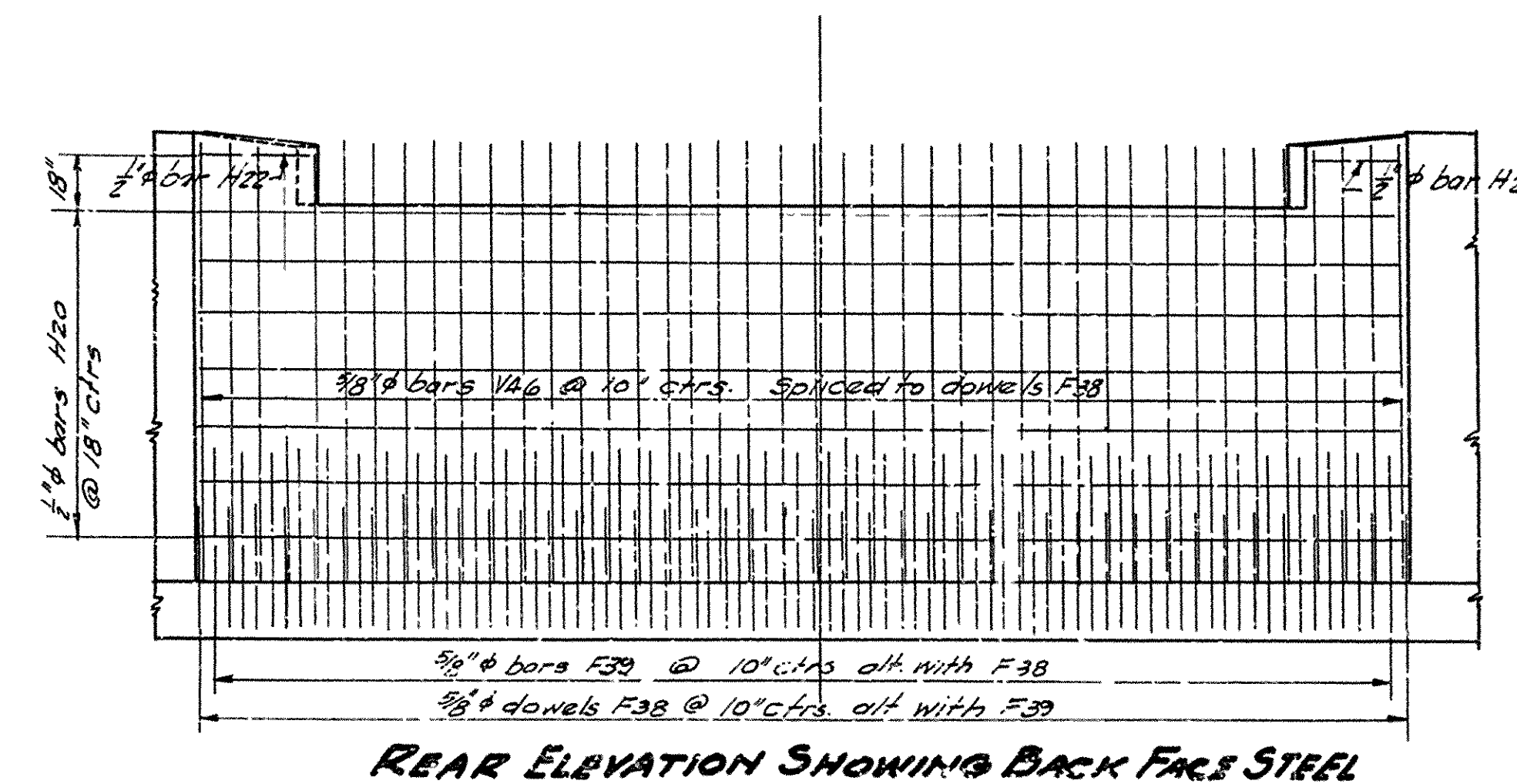
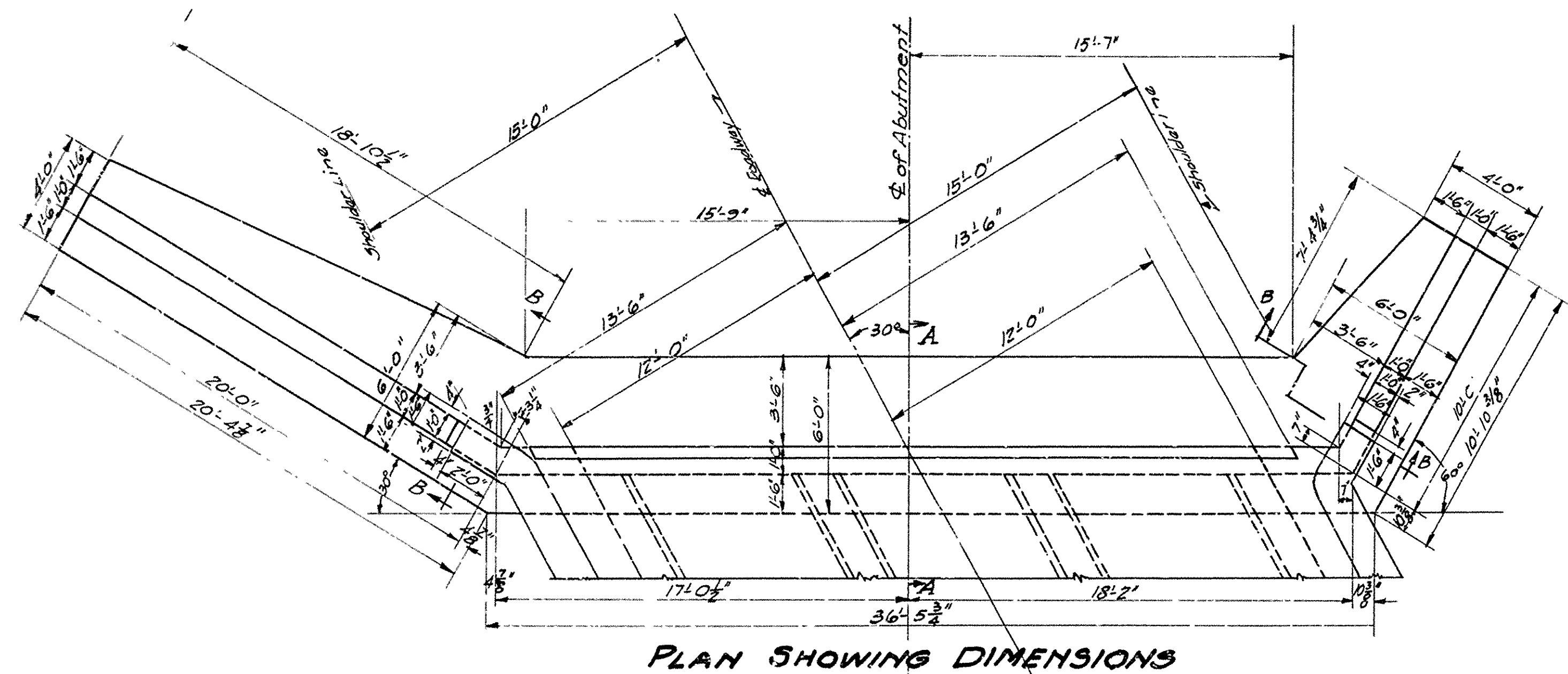
Drawn By: EAW Date: 7-12-17
Traced By: MKN Date: 7-12-17
Checked By: Date: 7-12-17

Scale: 1 in. = 10' n.

BRIDGE NO. 1648 DRAWING NO. 3028

BRIDGE ENGINEER

FISCAL YEAR	Job No.	SHEET No	TOTAL SHEETS
		6	9



LIST OF BENT BARS						
Mark	Size	length	a	b	c	Diagram
F23	$\frac{1}{2}" \phi$	40'-4"	36'-4"	2'-0"	2'-0"	
H32	$\frac{3}{8}" \phi$	53'-6"	35'-0"	12'-0"	6'-6"	
F38	$\frac{3}{8}" \phi$	5'-11"	2'-11"	3'-3"	6"	
F39	$\frac{3}{8}" \phi$	7'-4"	2'-11"	4'-8"	6"	
F40	$\frac{1}{2}" \phi$	5'-3"	2'-1"	2'-0"	1'-0"	
F41	$\frac{1}{2}" \phi$	6'-7"	2'-1"	4'-2"	4"	
F42	$\frac{1}{2}" \phi$	3'-4"	2'-10"			
H23	$\frac{1}{2}" \phi$	2'-6"	1'-6"	2'-0"		
H24	$\frac{1}{2}" \phi$	17'-0"	15'-0"	2'-0"		
H25	$\frac{1}{2}" \phi$	11'-6"	9'-4"	2'-0"		
H26	$\frac{1}{2}" \phi$	6'-6"	4'-6"	2'-0"		
H34	$\frac{1}{2}" \phi$	21'-9"	19'-9"	2'-0"		
H35	$\frac{1}{2}" \phi$	20'-3"	18'-3"	2'-0"		
H36	$\frac{1}{2}" \phi$	8'-3"	6'-3"	2'-0"		
H27	$\frac{1}{2}" \phi$	11'-3"	9'-3"	2'-0"		
H28	$\frac{1}{2}" \phi$	11'-0"	9'-0"	2'-0"		
H29	$\frac{1}{2}" \phi$	7'-6"	5'-6"	2'-0"		
H30	$\frac{1}{2}" \phi$	4'-6"	2'-6"	2'-0"		
H37	$\frac{1}{2}" \phi$	11'-9"	9'-9"	2'-0"		
H38	$\frac{1}{2}" \phi$	6'-9"	2'-9"	2'-0"		

DETAILS OF ASSESSMENT No. 1
BRIDGE OVER POND CREEK
FRANKLIN COUNTY

ROUTE 64 SEC. 3

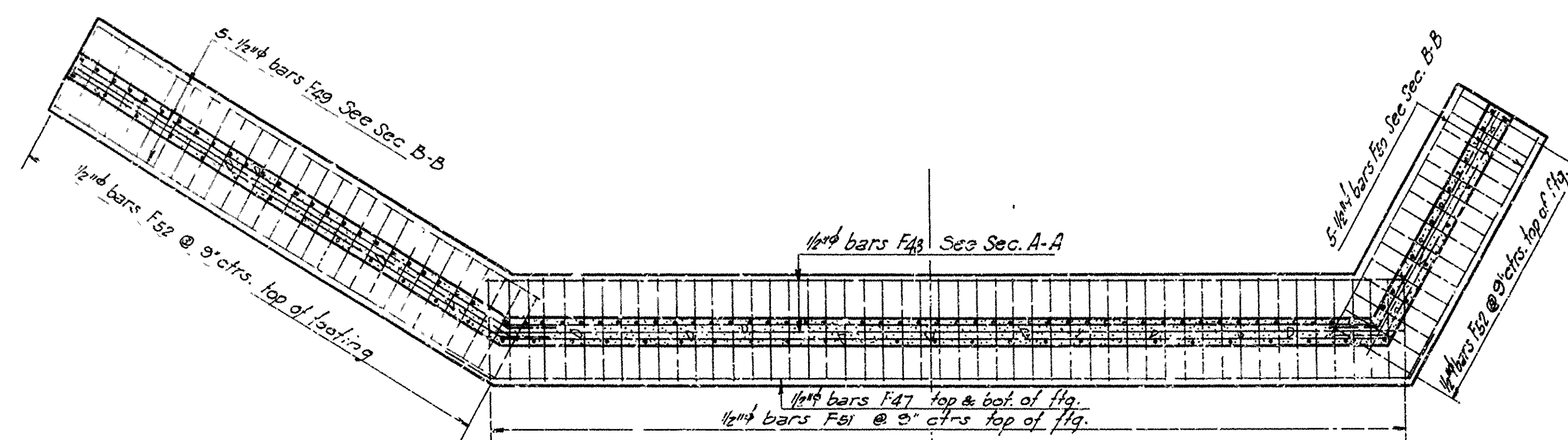
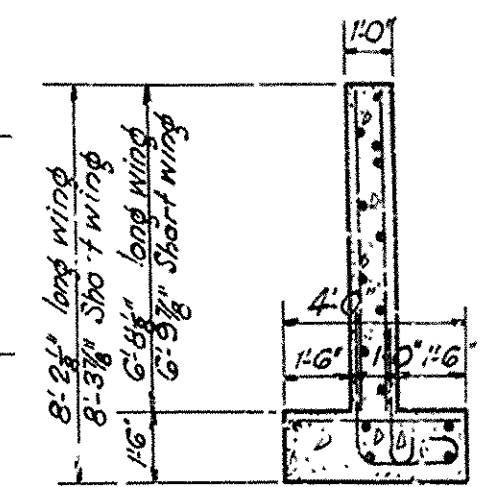
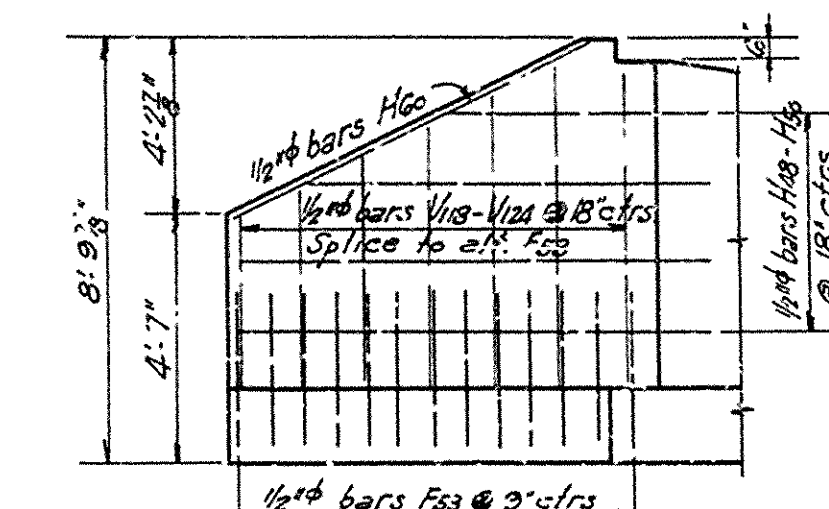
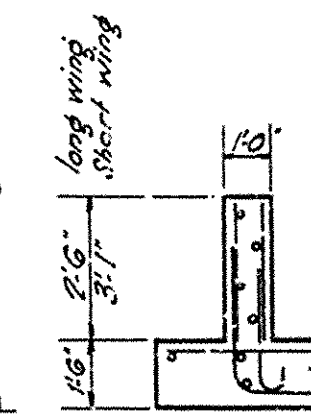
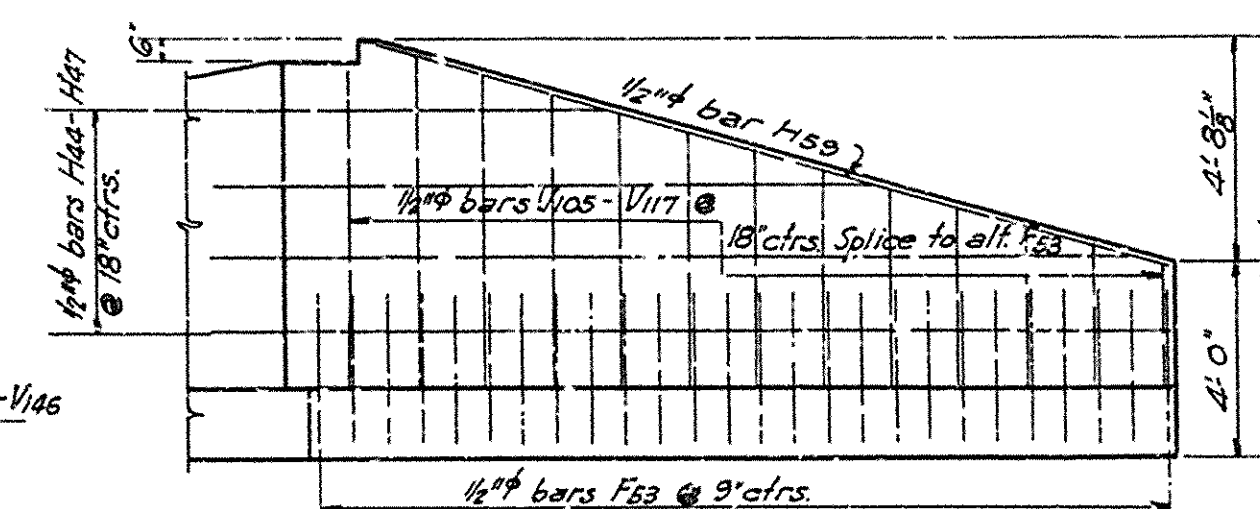
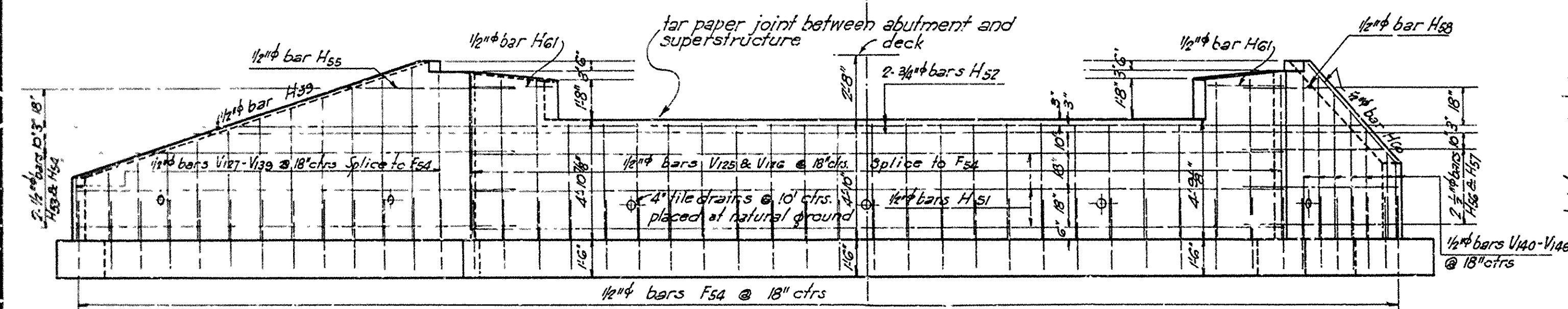
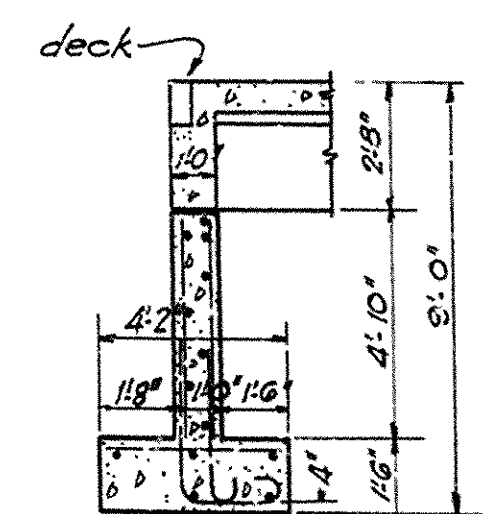
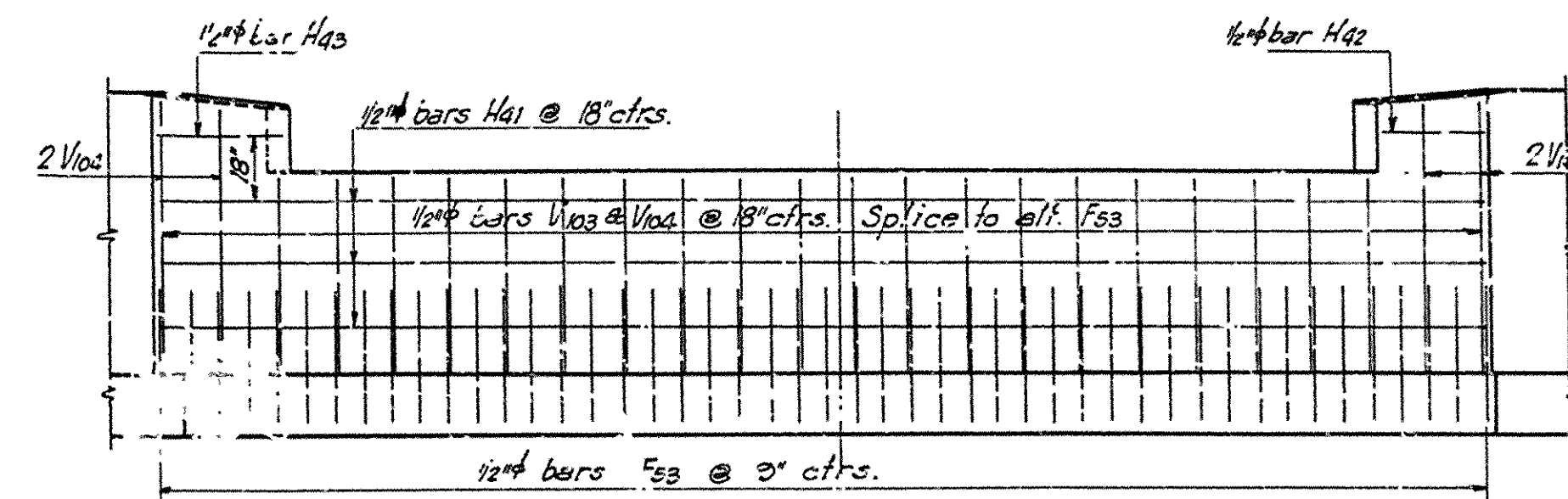
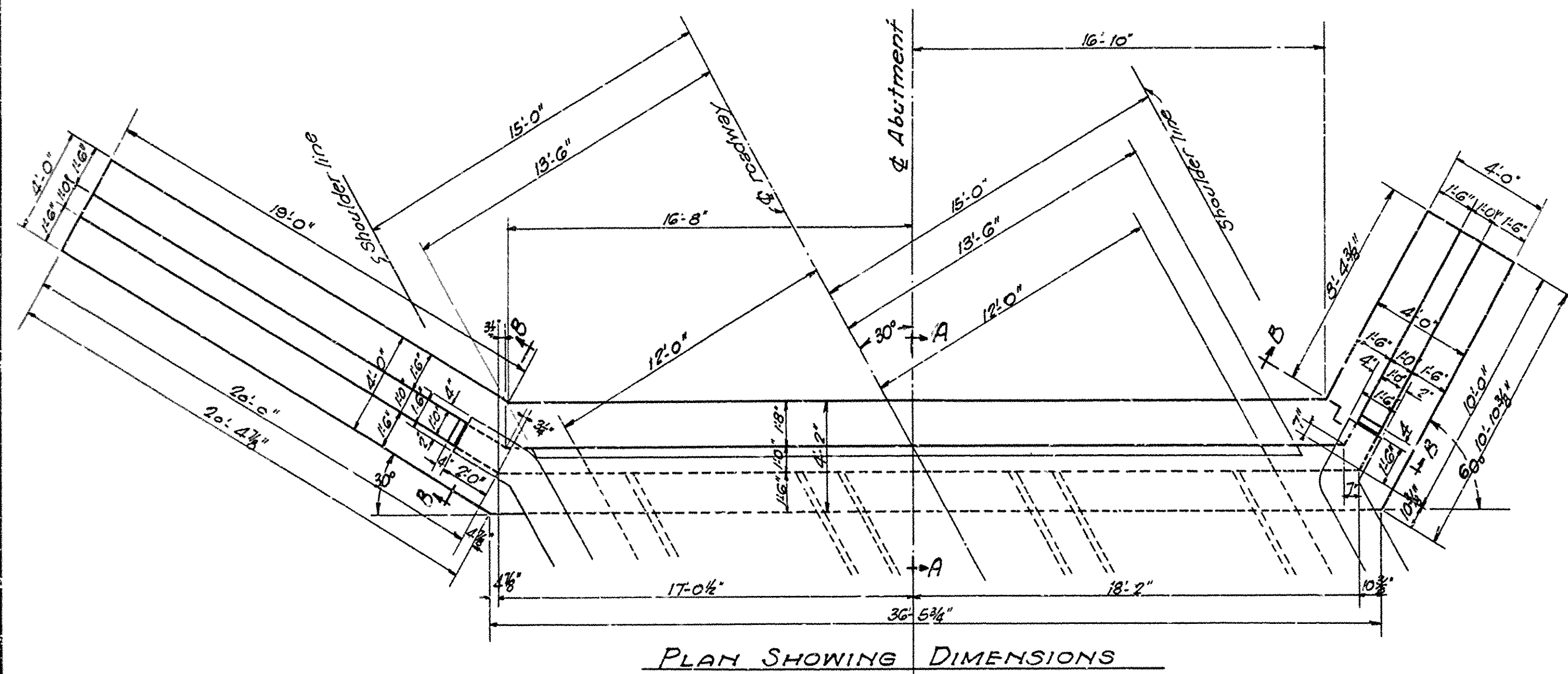
ARKANSAS STATE HIGHWAY COMMISSION
LITTLE ROCK, ARK.

Drawn By: _____ Date: _____
 Traced By: _____ Date: _____
 Checked By: _____ Date: _____
 Scale: { in. = ft.

 BRIDGE NO. 1648 DRAWING NO. 3029

BRIDGE ENGINEER

FISCAL YEAR	Job No.	SHEET No	TOTAL SHEETS
		7	9



LIST OF BENT BARS						
Mark	Size	length	a'	b'	c'	Diagram
F47	1/2"φ	40'-4"	36'-4"	2'-0"	2'-0"	
H52	3/4"φ	53'-6"	35'-0"	12'-0"	6'-6"	
F53	1/2"φ	5'-8"	2'-1"	3'-3"		
F54	1/2"φ	3'-4"	2'-0"			
H44	1/2"φ	21'-6"	19'-6"	2'-0"		
H45	1/2"φ	20'-6"	18'-6"	2'-0"		
H46	1/2"φ	13'-9"	12'-9"	2'-0"		
H47	1/2"φ	9'-3"	7'-3"	2'-0"		
H53	1/2"φ	21'-3"	19'-3"	2'-0"		
H54	1/2"φ	18'-3"	16'-3"	2'-0"		
H55	1/2"φ	8'-6"	6'-6"	2'-0"		
H48	1/2"φ	11'-3"	9'-3"	2'-0"		
H49	1/2"φ	9'-9"	7'-9"	2'-0"		
H50	1/2"φ	6'-6"	4'-6"	2'-0"		
H56	1/2"φ	11'-9"	9'-9"	2'-0"		
H57	1/2"φ	10'-0"	8'-0"	2'-0"		
H58	1/2"φ	5'-0"	3'-0"	2'-0"		

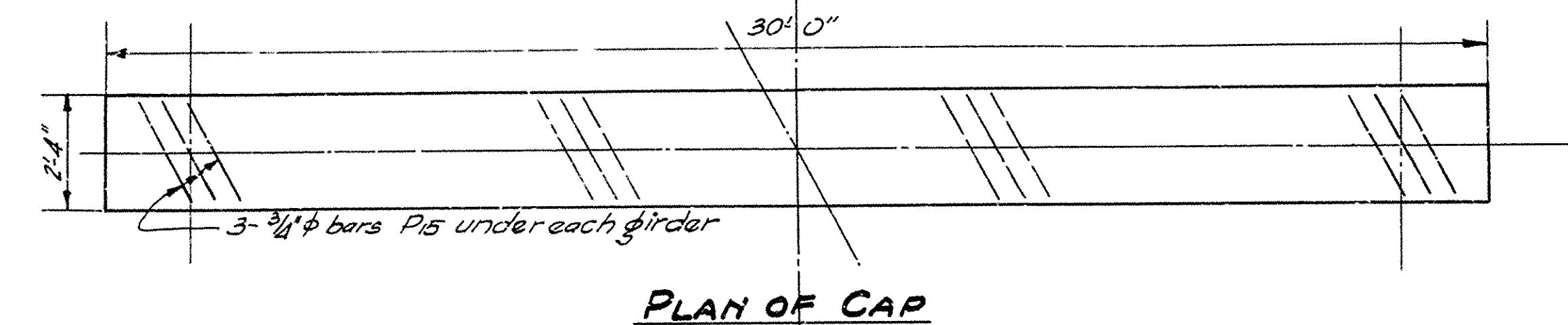
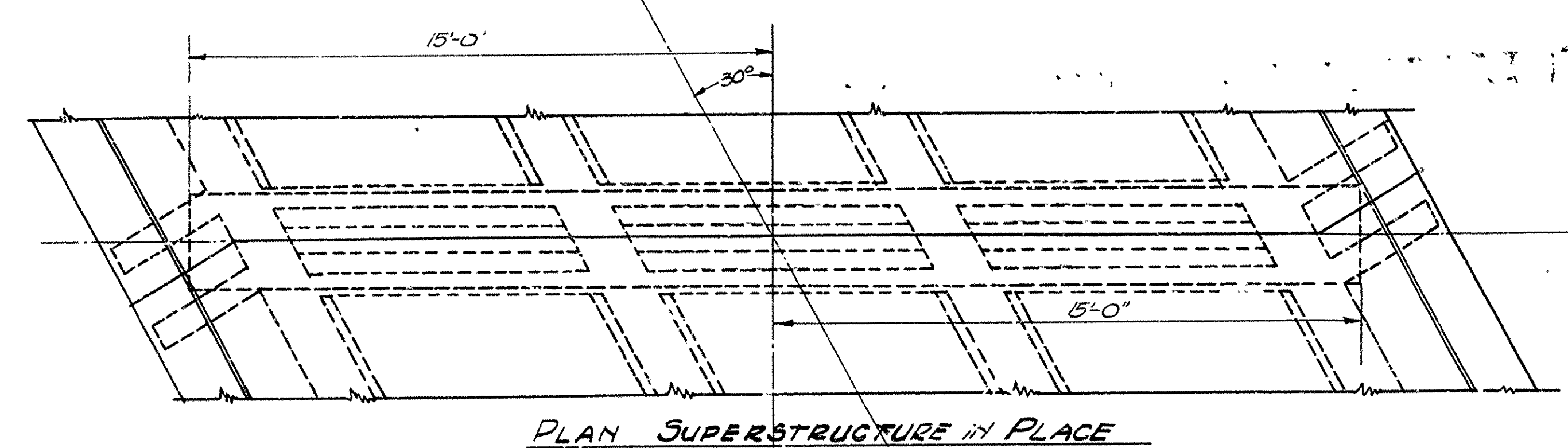
DETAILS OF ABUTMENT No. 2
BRIDGE OVER POND CREEK
FRANKLIN COUNTY
ROUTE 64 SEC 3

ARKANSAS STATE HIGHWAY COMMISSION
LITTLE ROCK, ARK.

Drawn By: EAW Date: 1-22-31
Traced By: EAW Date: 1-23-31
Checked By: _____ Date: _____
BRIDGE NO. 1648 DRAWING NO. 3030

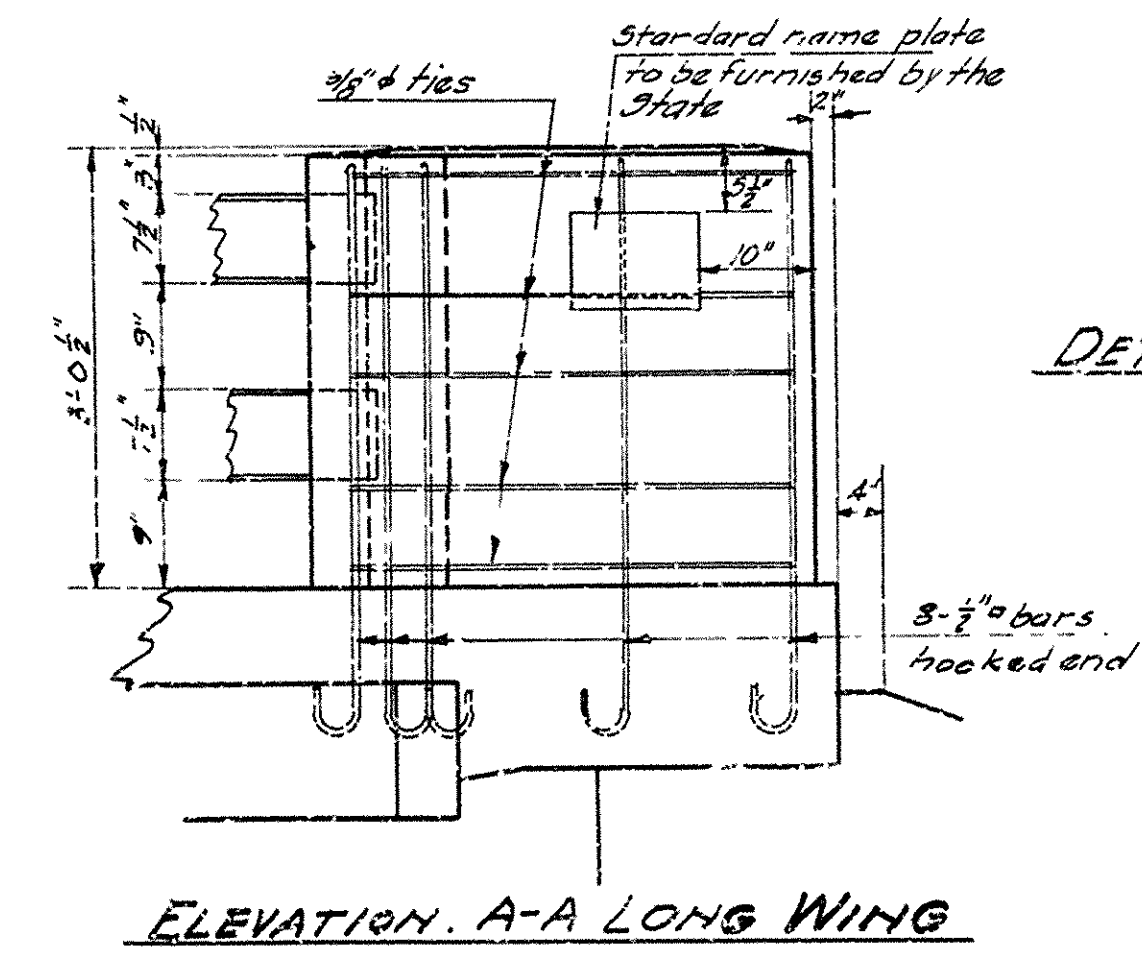
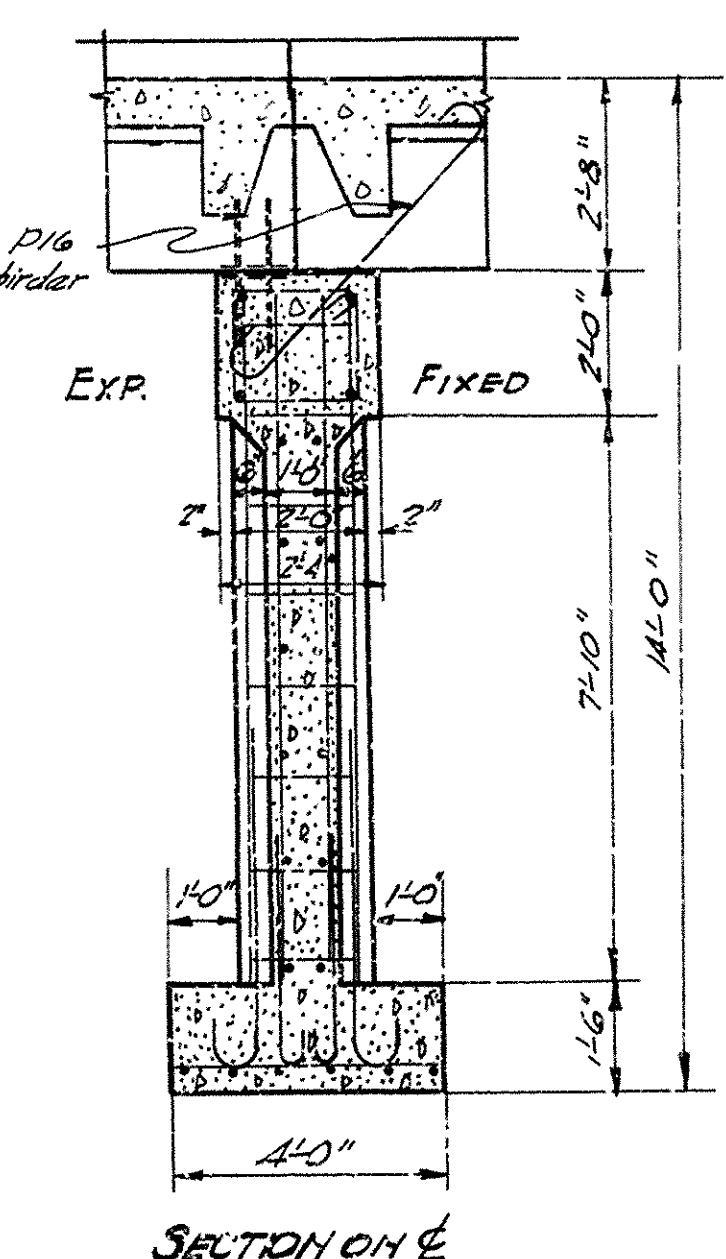
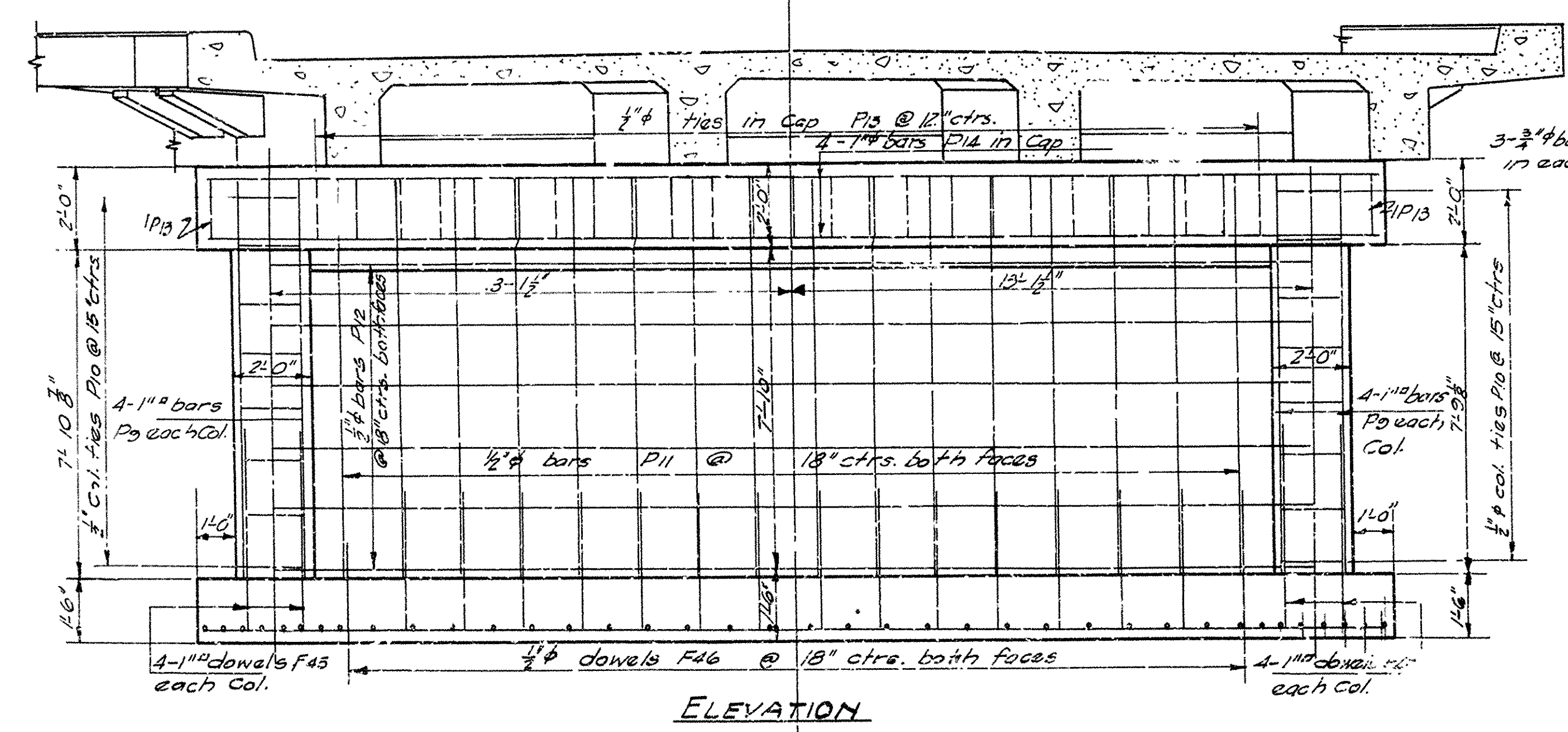
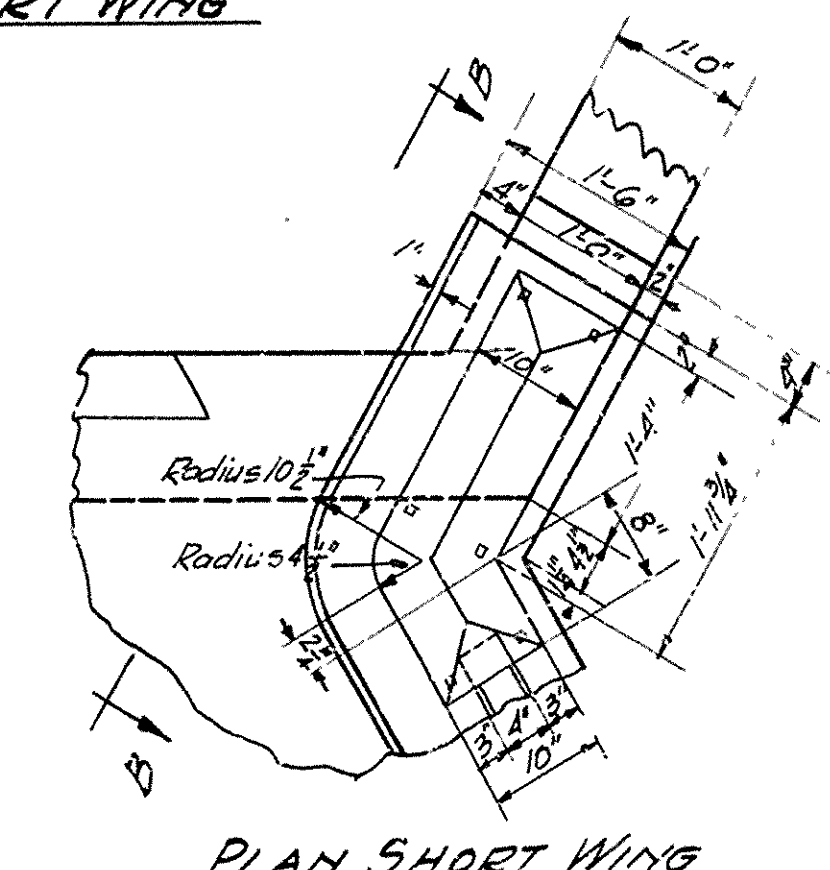
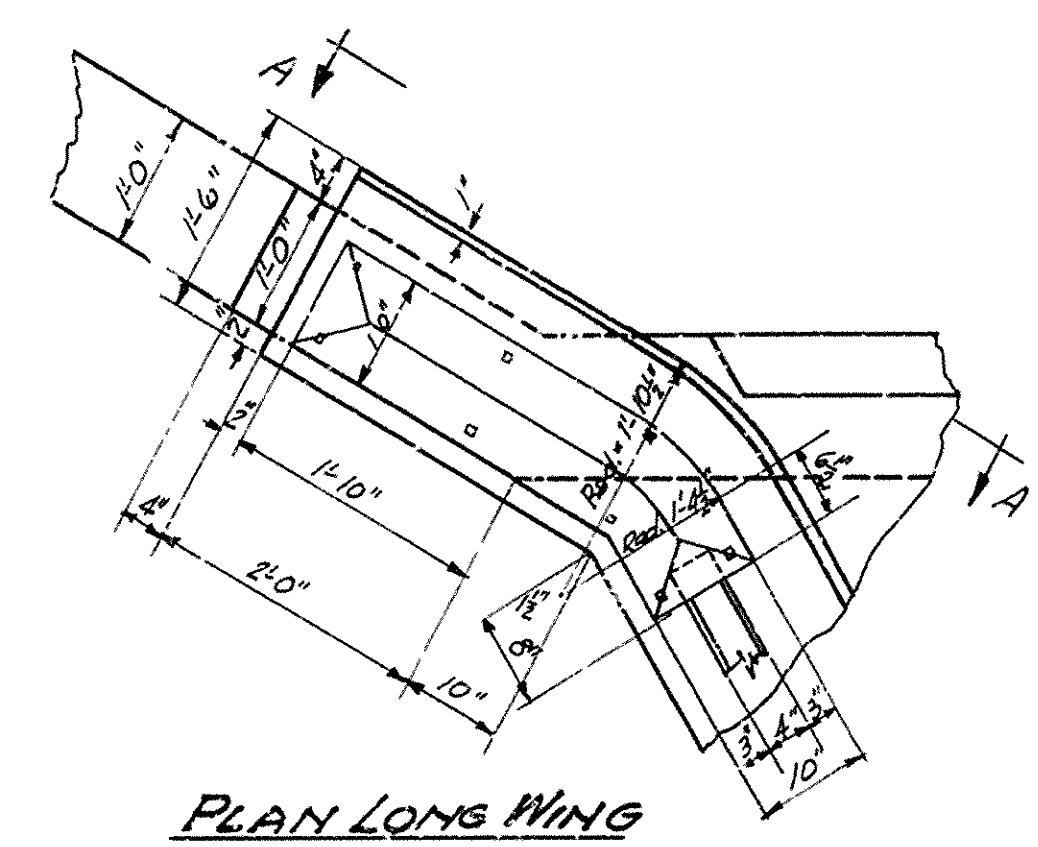
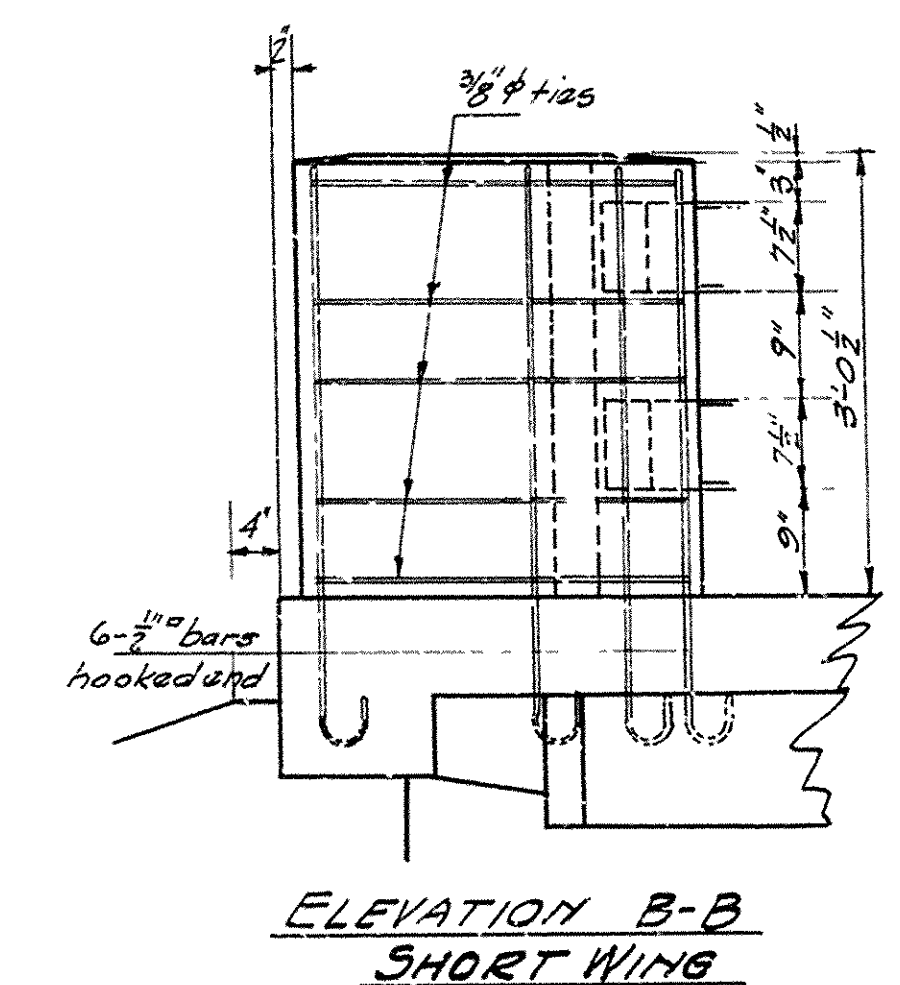
BRIDGE ENGINEER

FISCAL YEAR	Job No.	SHEET No.	TOTAL SHEETS
		8	9

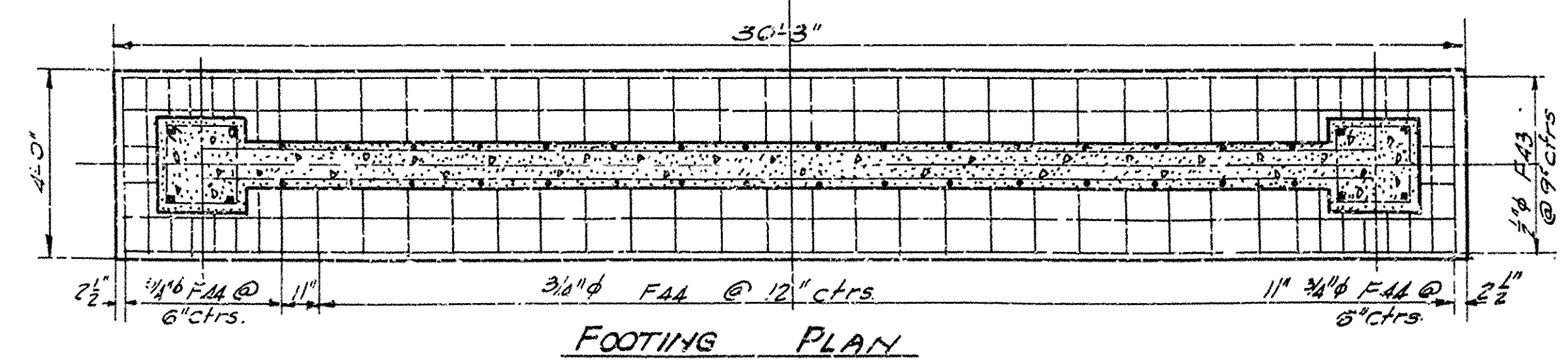


LIST OF BENT BARS

Mark	Size	length	a	b	Diagrams
F45	1"φ	5'-6"	4'-6"	8"	
F46	1/2"φ	3'-6"	3'-0"	4"	
P10	1/2"φ	7'-3"	1'-7 1/2"	1'-7 1/2"	
P13	1/2"φ	7'-11"	1'-11 1/2"	1'-7 1/2"	
P15	3/4"φ	4'-3"	2'-3"	6"	
P16	3/4"φ	6'-6"	5'-0"	6"	



DETAILS OF TURNOUTS
Scale: 3/4" = 1'-0"



DETAILS OF
BENTS AND TURNOUTS
BRIDGE OVER POND CREEK
FRANKLIN COUNTY
ROUTE 64 SEC. 3
ARKANSAS STATE HIGHWAY COMMISSION
LITTLE ROCK, ARK.
Drawn By: _____ Date: _____
Traced By: _____ Date: _____
Checked By: _____ Date: _____
BRIDGE NO. 1648 DRAWING NO. 3031

BRIDGE ENGINEER